

METRIC	1. All dimensions are in millimeters unless otherwise noted. 2. All elevations and stations are in meters.	FHWA REG. NO.	STATE	PROJECT NUMBER	SHEET NO.	TOTAL SHEETS
		1	MAINE	IM-95-9033(00)E	1	9
				STP-8981(00)X IM-95-9047(00)E		

SPECIFICATIONS

**DESIGN:** LOAD FACTOR DESIGN PER ASSHTO STANDARD SPECIFICATIONS FOR HIGHWAY BRIDGES, 1996 AND INTERIM SPECIFICATION 1999.

**CONTRACT:** STATE OF MAINE, DEPARTMENT OF TRANSPORTATION, STANDARD SPECIFICATIONS HIGHWAYS AND BRIDGES, REVISION OF APRIL 1995, AND SUPPLEMENTAL SPECIFICATIONS FOR CONSTRUCTION, FEBRUARY 1, 2001.

**DESIGN LOADING:** LIVE LOAD: MS 18.1 (EXIST.) (SIDNEY)  
LIVE LOAD: MS 18.1 (EXIST.) (NORWAY)  
LIVE LOAD: MS 18.1 (EXIST.) (RICHMOND)

**UTILITIES:**

**SIDNEY** CENTRAL MAINE POWER CO., ADELPHIA COMM.,  
SIDNEY TEL. COMPANY

**NORWAY** CENTRAL MAINE POWER CO., VERIZON,  
ADELPHIA COMM. CO., NORWAY WATER DISTRICT

**RICHMOND** CENTRAL MAINE POWER CO., BELL ATLANTIC,  
ADELPHIA COMM. CO.

**STANDARD DETAILS:** STATE OF MAINE, DEPARTMENT OF TRANSPORTATION, STANDARD DETAILS, HIGHWAY AND BRIDGES APRIL 1997, AND SUPPLEMENTAL STANDARD DETAILS FOR CONSTRUCTION, FEBRUARY 1, 2001.

**MAINTENANCE OF TRAFFIC:**

**SIDNEY** CLOSE ONE LANE WIDTH WHILE MAINTAINING ONE-WAY TRAFFIC IN OPPOSITE LANE WITH TRAFFIC LIGHT. MAINTAIN A MINIMUM TRAFFIC LANE OF 3.000 m CLEAR.

**NORWAY** PHASE 1: CLOSE TWO LANE WIDTHS WHILE MAINTAINING ONE-WAY TRAFFIC IN OPPOSITE LANE WITH TRAFFIC LIGHT. MAINTAIN A MIN. OF 4.800 m CLEAR.  
PHASE 2: CLOSE ONE LANE WIDTH WHILE MAINTAINING TWO-WAY TRAFFIC IN OPPOSITE LANES. MAINTAIN A MIN. OF 3.300 m CLEAR EACH LANE.

**RICHMOND** PHASE 1: CLOSE TWO LANE WIDTHS WHILE MAINTAINING ONE-WAY TRAFFIC IN OPPOSITE LANE WITH TRAFFIC LIGHT. MAINTAIN A MIN. OF 3.900 m CLEAR.  
PHASE 2: CLOSE ONE LANE WIDTH WHILE MAINTAINING TWO-WAY TRAFFIC IN OPPOSITE LANES. MAINTAIN A MIN. OF 3.900 m CLEAR EACH LANE.

**NOTE:** ALL WORK CONTEMPLATED UNDER THIS CONTRACT TO BE GOVERNED BY AND IN CONFORMITY WITH THE STANDARD SPECIFICATIONS (REVISION OF APRIL, 1995) AND SUPPLEMENTALS THERETO, EXCEPT AS MODIFIED ON THE PLANS AND IN THE SPECIAL PROVISIONS.

**REFERENCE:** PLANS OF THE EXISTING BRIDGES ARE AVAILABLE FOR THE CONTRACTORS REFERENCE AT THE BRIDGE DESIGN OFFICE IN AUGUSTA. THE PLANS ARE REPRODUCTIONS OF THE ORIGINAL DRAWINGS AS PREPARED FOR THE CONSTRUCTION OF THE BRIDGES AND IT IS VERY UNLIKELY THAT THE PLANS WILL SHOW ANY CONSTRUCTION FIELD CHANGES OR ANY ALTERATIONS WHICH MAY HAVE BEEN MADE TO THE BRIDGES DURING THEIR LIFE SPANS.

THE BRIDGE DECK EVALUATION REPORTS OF THE EXISTING BRIDGES ARE AVAILABLE FOR THE CONTRACTOR'S REFERENCE AT THE BRIDGE DESIGN OFFICE IN AUGUSTA. THE REPORTS CONTAINS VISUAL INSPECTION INFORMATION AND DECK CORE DATA OF THE BRIDGES. THERE IS NO ASSURANCE THAT THIS INFORMATION IS A TRUE REPRESENTATION OF THE CONDITIONS OF THE DECKS.

STATE OF MAINE  
DEPARTMENT OF TRANSPORTATION



PLANS

DENSMORE ROAD BRIDGE  
OVER  
INTERSTATE 95  
IN THE TOWN OF  
SIDNEY  
KENNEBEC COUNTY  
PROJECT NO. IM-95-9033(00)E  
PROJECT LENGTH 0.12486 KILOMETERS

ROUTE 197 BRIDGE  
OVER  
INTERSTATE 95  
IN THE TOWN OF  
RICHMOND  
SAGADAHOC COUNTY  
PROJECT NO. IM-95-9047(00)E  
PROJECT LENGTH 0.10370 KILOMETERS

PLEASANT STREET BRIDGE  
OVER  
LAKE PENNESSEEWASSEE OUTLET  
IN THE TOWN OF  
NORWAY  
OXFORD COUNTY  
PROJECT NO. STP-8981(00)X  
PROJECT LENGTH 0.04450 KILOMETERS

SHEET NO.	DESCRIPTION
1.....	TITLE SHEET
2.....	ESTIMATE OF QUANTITIES
<b>SIDNEY</b>	
3.....	GENERAL PLAN
4.....	DETAILS
5.....	THRIE BEAM DETAILS
<b>NORWAY</b>	
6.....	GENERAL PLAN
7.....	DETAILS
<b>RICHMOND</b>	
8.....	GENERAL PLAN
9.....	DETAILS

SIDNEY TRAFFIC DATA

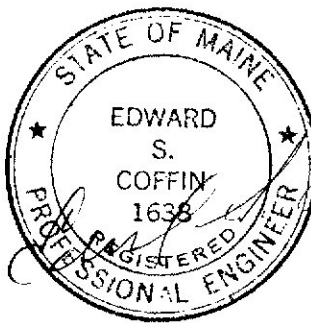
AADT 2000	=	480
AADT 2020	=	760
DHV-% OF AADT	=	12
% TRUCKS (AADT)	=	8
% TRUCKS (DHV)	=	6
DIRECTIONAL DISTRIBUTION	=	50
SPEED LIMIT (Km/h)	=	70
18 KN EQ. P 2.0	=	18
18 KN EQ. P 2.5	=	17

RICHMOND TRAFFIC DATA

AADT 2000	=	4440
AADT 2020	=	7100
DHV-% OF AADT	=	11
% TRUCKS (AADT)	=	9
% TRUCKS (DHV)	=	7
DIRECTIONAL DISTRIBUTION	=	55
SPEED LIMIT (Km/h)	=	80
18 KN EQ. P 2.0	=	185
18 KN EQ. P 2.5	=	182

NORWAY TRAFFIC DATA

AADT 2000	=	13610
AADT 2020	=	19050
DHV-% OF AADT	=	9
% TRUCKS (AADT)	=	4
% TRUCKS (DHV)	=	3
DIRECTIONAL DISTRIBUTION	=	50
SPEED LIMIT (Km/h)	=	40
18 KN EQ. P 2.0	=	471
18 KN EQ. P 2.5	=	480



COFFIN ENGINEERING & SURVEYING, LLC  
P.O. BOX 4687 CONY ROAD  
AUGUSTA, MAINE 04330  
TEL. 1-800-244-9475  
FAX 623-0016

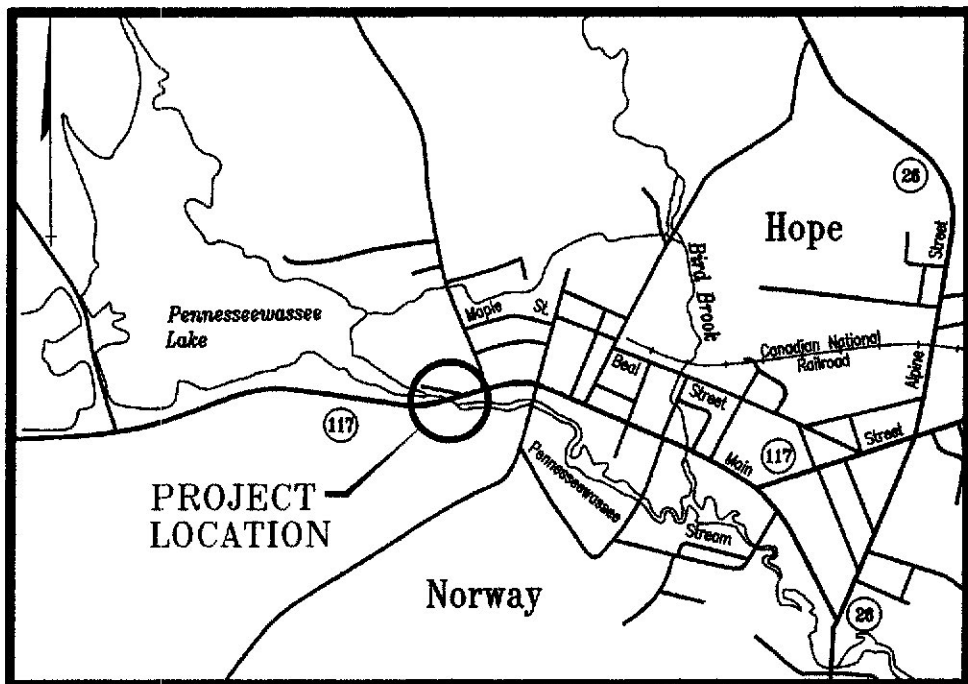
APPROVED:

STATE OF MAINE  
DEPARTMENT OF TRANSPORTATION

*Edward S. Coffin*  
COMMISSIONER  
03/12/01  
DATE

*John E. Darity*  
CHIEF ENGINEER  
03/12/01  
DATE

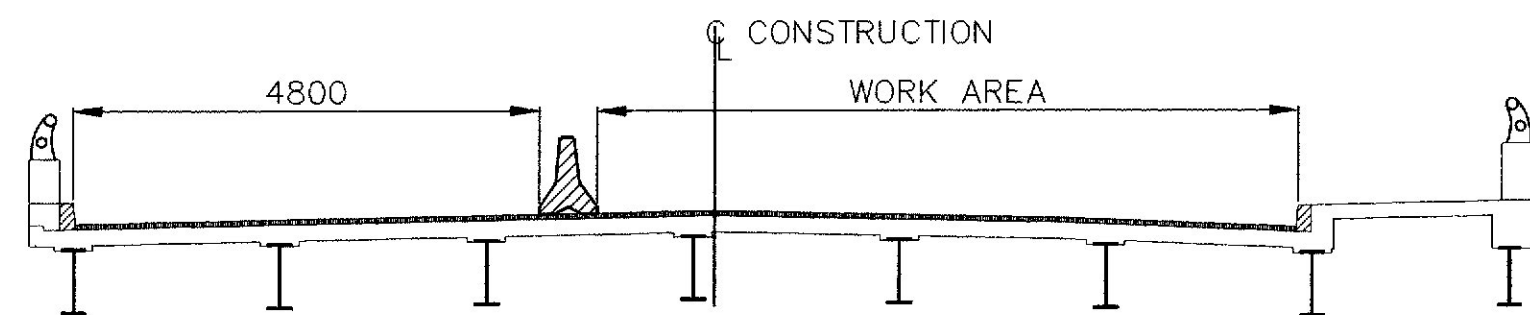




LOCATION MAP

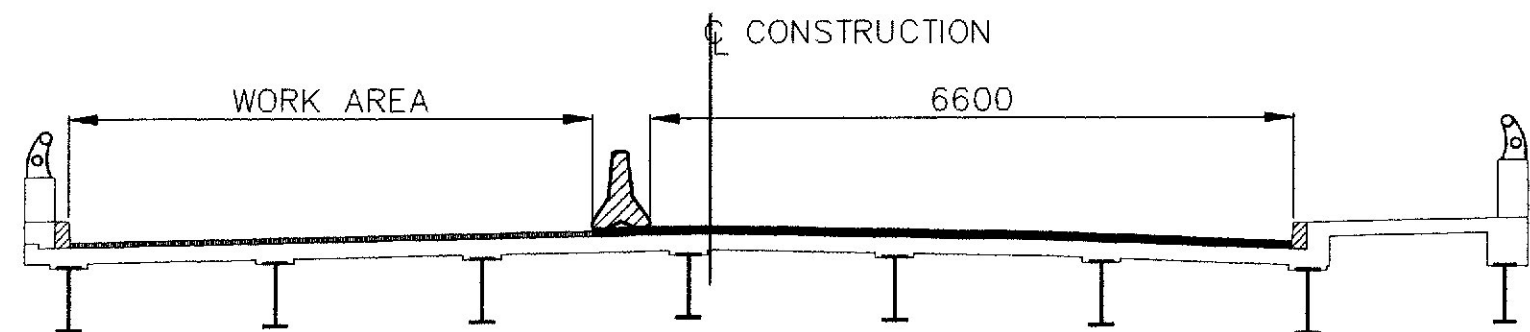
( KILOMETERS )

**MAINTENANCE OF TRAFFIC**



STAGE 1

PLACE TEMPORARY CONCRETE BARRIERS TO MAINTAIN ONE 4.800 m TRAVEL LANE. REMOVE BITUMINOUS PAVEMENT AND MEMBRANE FROM WORK AREA. PERFORM ALL REQUIRED REPAIRS AND REPLACEMENTS BEHIND BARRIERS. INSTALL MEMBRANE AND PAVE WORK AREA OF ROADWAY WITH ONE COURSE OF HOT BITUMINOUS PAVEMENT.

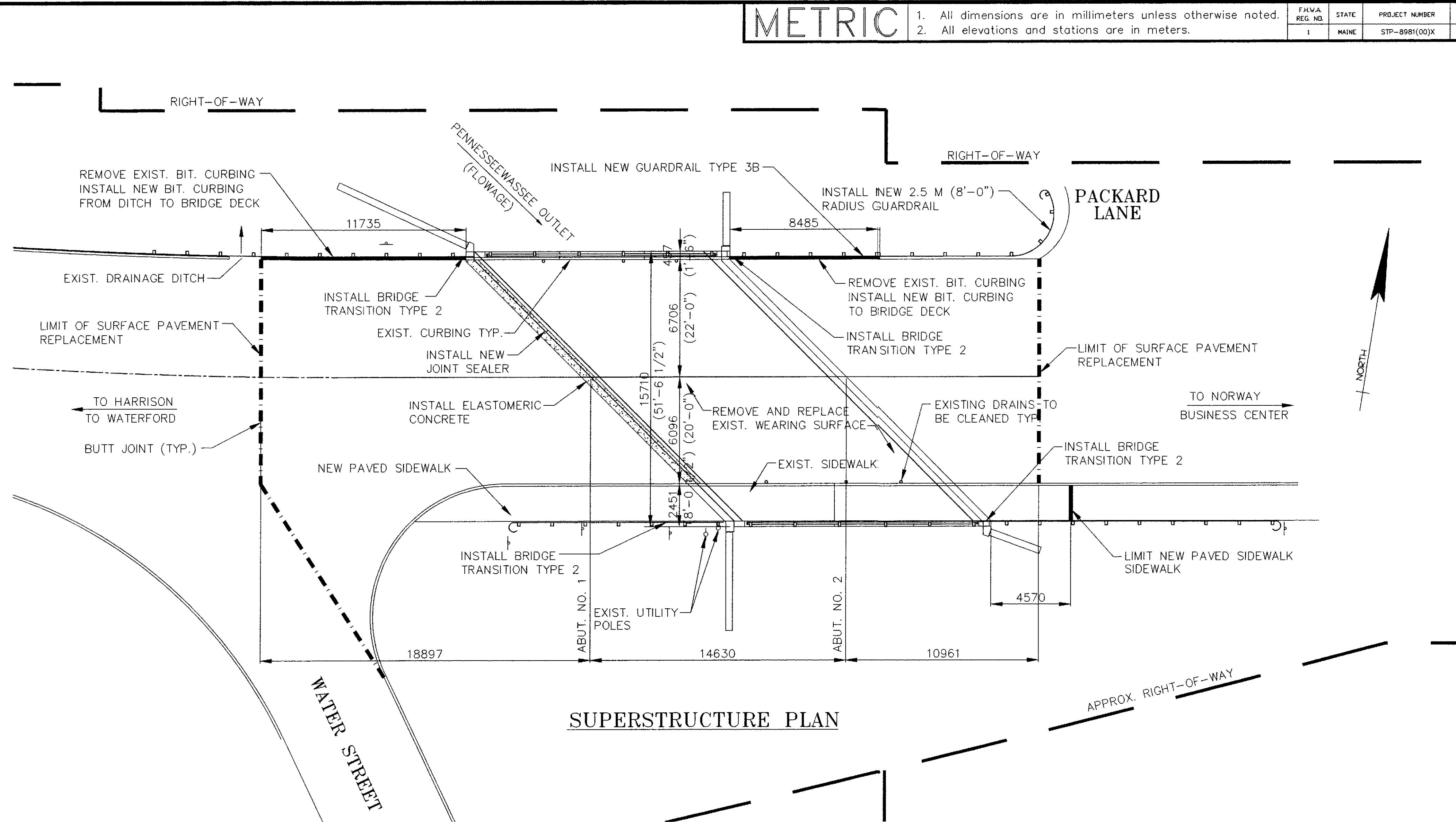


STAGE 2

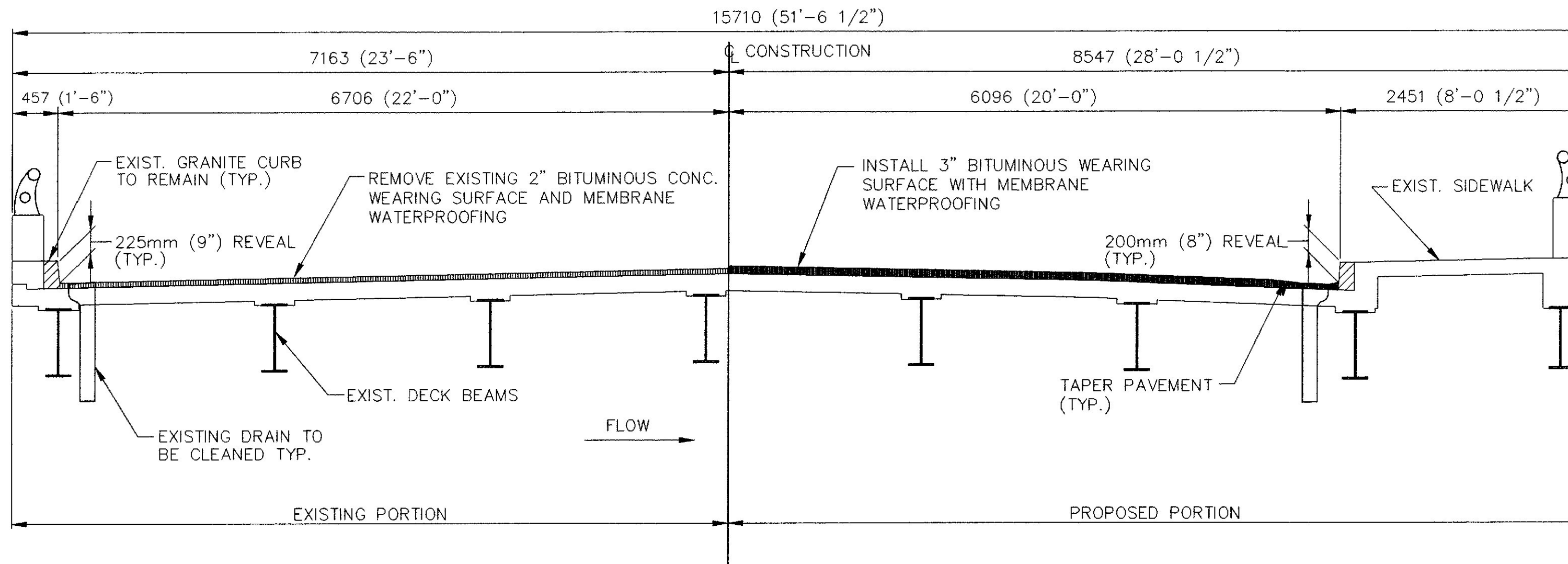
RELOCATE TEMPORARY CONCRETE BARRIERS TO MAINTAIN A MIN. OF TWO 3.300 m TRAVEL LANES AND PERFORM REMAINING REQUIRED REPAIRS AND REPLACEMENTS. INSTALL MEMBRANE AND PAVE REMAINING WORK AREA OF ROADWAY WITH ONE COURSE OF HOT BITUMINOUS PAVEMENT.

STAGE 3

REMOVE TEMPORARY CONCRETE BARRIERS AND PAVE FINAL COURSE OF BITUMINOUS PAVEMENT IN ONE OPERATION.



SUPERSTRUCTURE PLAN



TRANSVERSE SECTION

LOOKING EAST

PREPARED BY COFFIN ENGINEERING & SURVEYING, LLC  
P.O. BOX 4687 CONY ROAD AUGUSTA, MAINE 04330  
TELEPHONE: 207-623-9475

**SCOPE OF WORK:**

REMOVE EXISTING BITUMINOUS WEARING SURFACE AND REHABILITATE DECK AND SIDEWALK AS DIRECTED.  
REPAIR BRIDGE JOINTS AT ABUTMENTS AND RETROFIT TO MATCH NEW GRADE.  
INSTALL WATERPROOF MEMBRANE AND 75MM (3") BITUMINOUS PAVEMENT.  
MODIFY EXISTING APPROACH GUARD RAIL, AND ATTACH TO END POST.  
APPROACH WORK AS SHOWN

BRIDGE NO. 2677

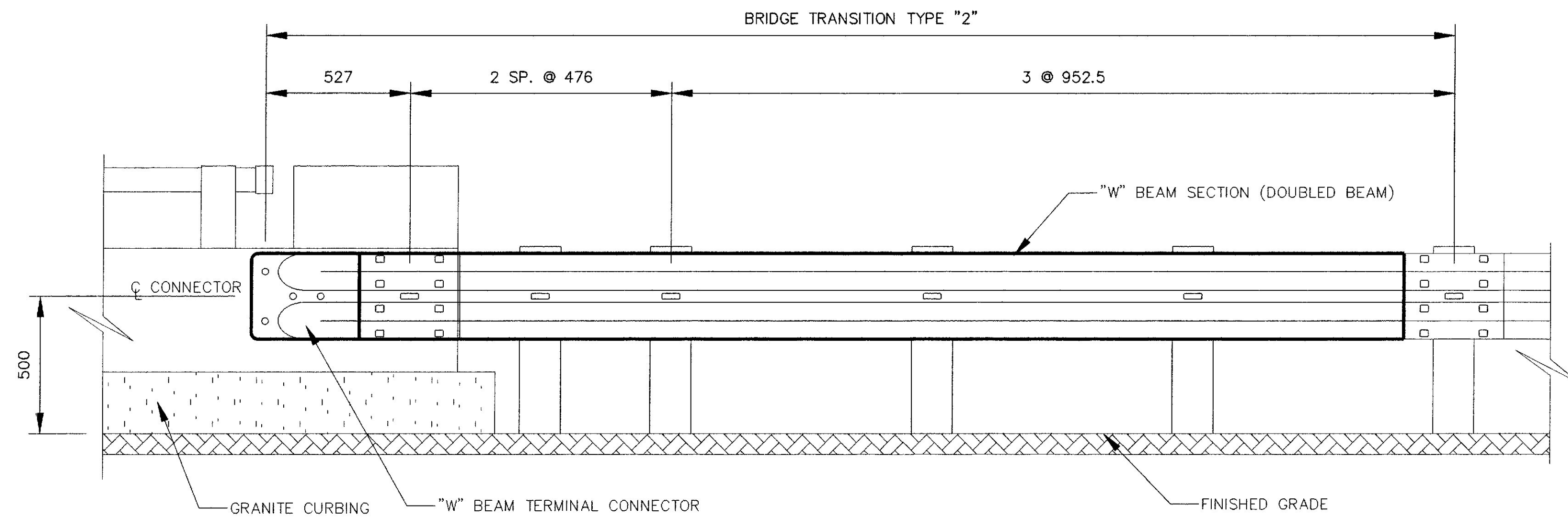
STATE OF MAINE  
DEPARTMENT OF TRANSPORTATION

PLEASANT STREET BRIDGE  
OVER  
LAKE PENNESSEEWASSEE OUTLET  
IN THE TOWN OF  
NORWAY  
OXFORD COUNTY  
GENERAL PLAN

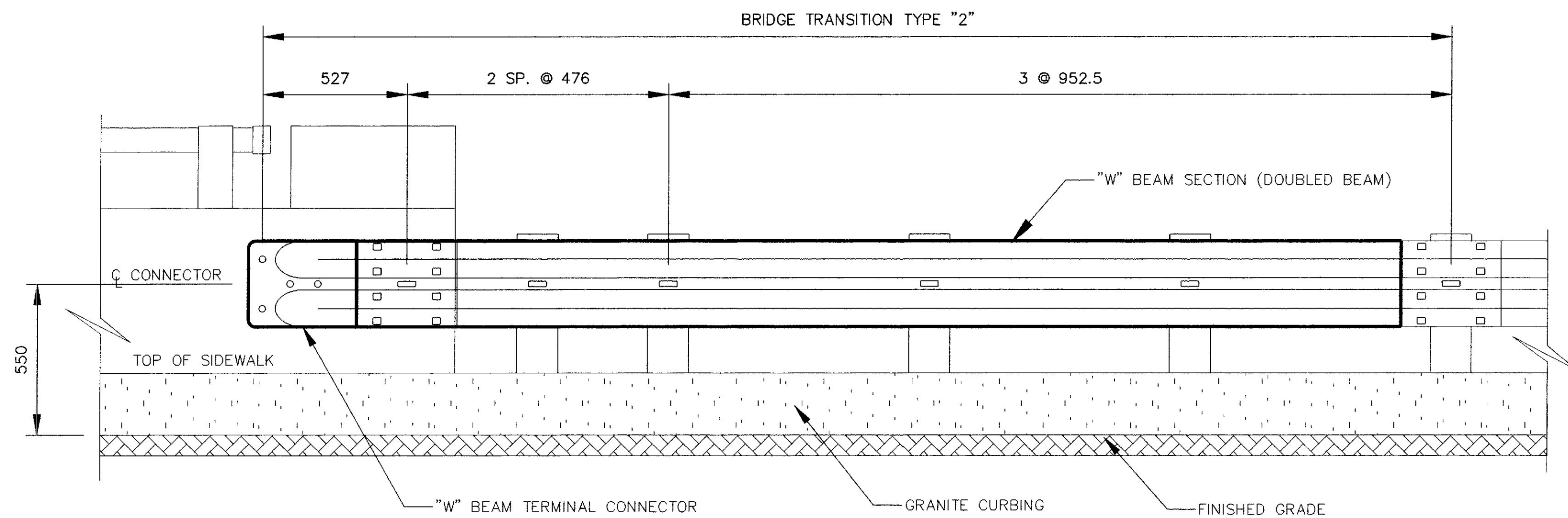
SHEET 1 OF 2 AUGUSTA, MAINE JANUARY, 2001

PROJECT DESIGN ENGINEER	DATE
BY	1/01
SPC	RJB
ESC	1/01
DESIGN-DETAILED	CHECKED
REVISIONS	FIELD CHANGES
PLANS	

PROJECT DESIGN ENGINEER	DATE
DESIGN-DETAILED	1/01
CHECKED	1/01
REVISIONS	
FIELD CHANGES	
BY	
SPC	BUB
ESC	
PLANS	



**APPROACH RAIL ELEVATION**  
NOT TO SCALE



**APPROACH RAIL ELEVATION**  
NOT TO SCALE

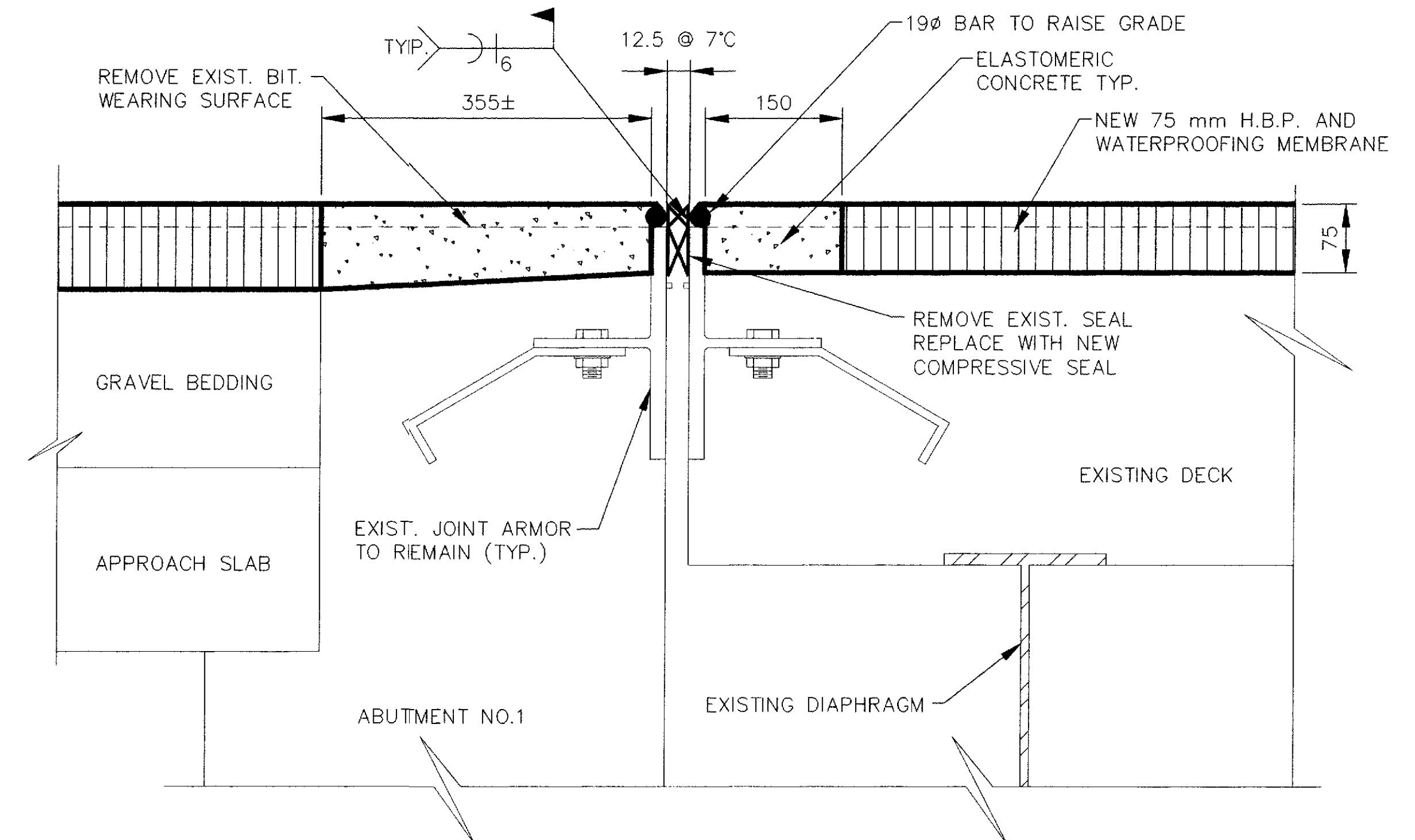
**CONSTRUCTION NOTES:**

1. ANY DAMAGE TO THE EXISTING CONCRETE RESULTING FROM THE CONTRACTOR'S OPERATION SHALL BE REPAIRED AT THE CONTRACTOR'S EXPENSE.
2. EXISTING APPROACH RAIL TO BE REMOVED WILL BECOME PROPERTY OF THE CONTRACTOR.
3. THE CONTRACTOR SHALL VERIFY ALL FIELD DIMENSIONS REQUIRED FOR FABRICATION OF EXPANSION JOINTS AND GUARDRAIL ITEMS.
3. MODIFICATIONS TO TYPE 3B GUARDRAIL SHALL INCLUDE ADDING HOLES AS REQUIRED FOR CONFORMANCE TO STANDARD DETAILS AND PROVIDING PANELS OF 10 GAGE THICKNESS. THESE MODIFICATIONS SHALL BE INCIDENTAL TO ITEM 606.17 GUARDRAIL TYPE 3B (SINGLE RAIL).
5. THREADED ROD SHALL BE ASTM A325 OR EQUAL.
6. ALL ASSOCIATED HARDWARE, INCLUDING BOLTS, THREADED RODS, WASHERS, NUTS AND PLATES SHALL BE HOT DIPPED GALVANIZED AFTER FABRICATION. GALVANIZING SHALL CONFORM TO THE REQUIREMENTS OF ASTM A153.

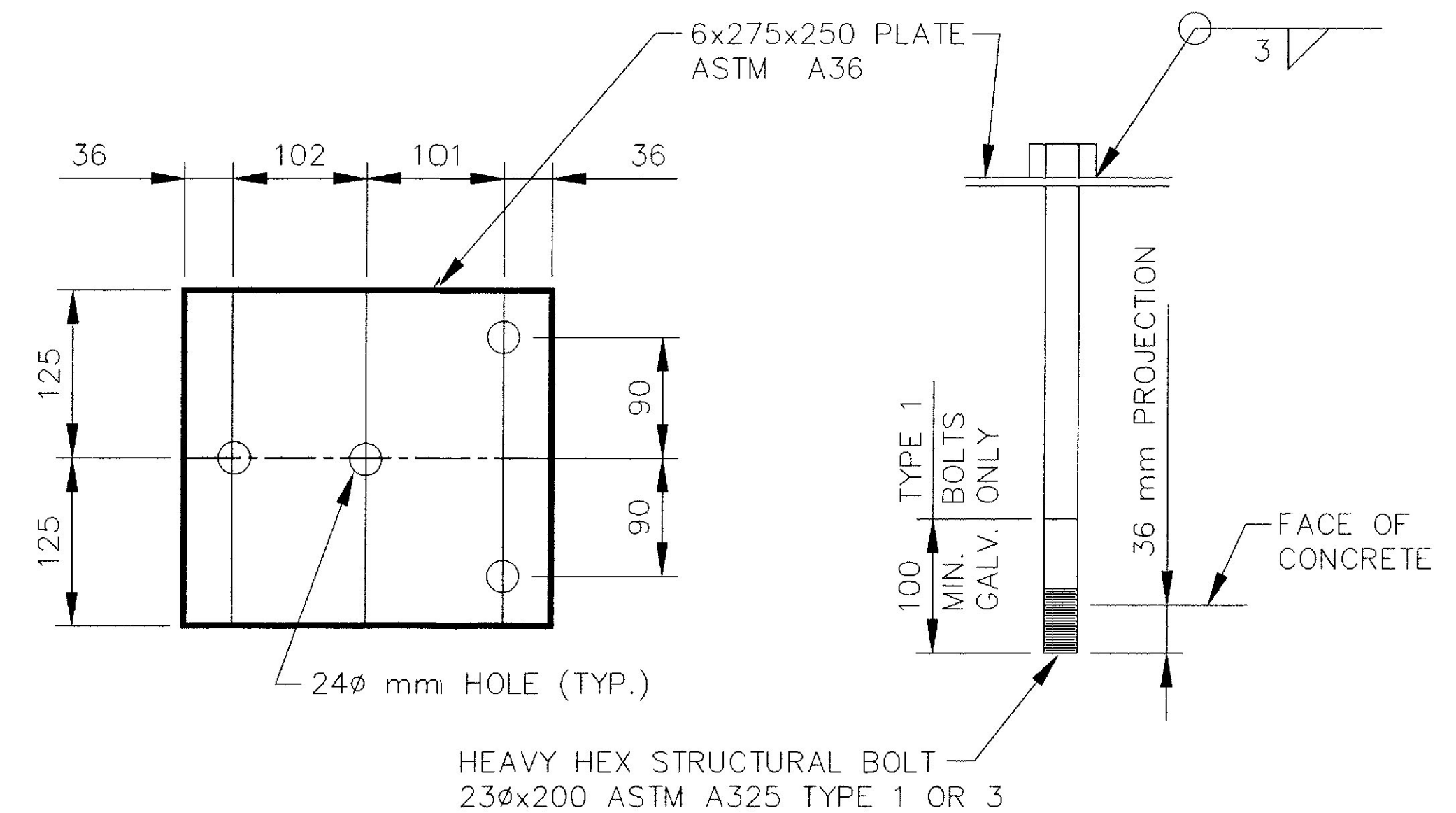
**METRIC**

1. All dimensions are in millimeters unless otherwise noted.
2. All elevations and stations are in meters.

FHWA REG. NO.	STATE	PROJECT NUMBER	SHEET NO.	TOTAL SHEETS
1	MAINE	STP-89B(100)X	7	9



**BRIDGE JOINT MODIFICATION TYPE 1**  
SCALE: 1=5



**TERMINAL CONN. ANCHORAGE**  
NO SCALE

BRIDGE NO. 2677

STATE OF MAINE  
DEPARTMENT OF TRANSPORTATION  
  
PLEASANT STREET BRIDGE  
OVER  
LAKE PENNESSEEWASSEE OUTLET  
IN THE TOWN OF  
NORWAY  
OXFORD COUNTY  
**DETAILS**

PREPARED BY COFFIN ENGINEERING & SURVEYING, LLC  
P.O. BOX 4687 CONY ROAD AUGUSTA, MAINE 04330  
TELEPHONE: 207-623-9475

SHEET 2 OF 2 AUGUSTA, MAINE JANUARY, 2001